

i-JECT dedicated needle



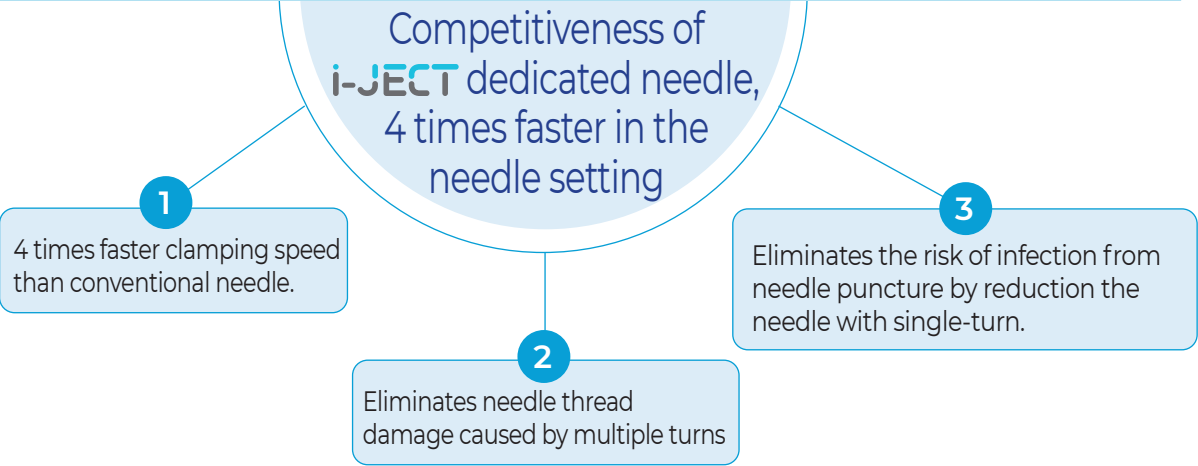
Setting time for i-JECT dedicated needle: **1.3sec.**


VS

Conventional existing needle



Setting time for conventional needle : **4sec.**



i-JECT only Needle price tag				
Dedicated Needle Photo	Product name	Standard	Quantity	Price
	31G 12mm(EX.short)-special	PACK	1	₩18,000
	30G 12mm(EX.short)	"	1	₩8,800
	30G 21mm(Short)	"	1	₩8,800
	30G 25mm(Long)	"	1	₩8,800
	27G 21mm(Short)	"	1	₩8,800
	27G 25mm(Long)	"	1	₩8,800

Digital Automatic Syringe

i-JECT



▲Product descriptions i-JECT

Pain Control Package

New i-JECT ON





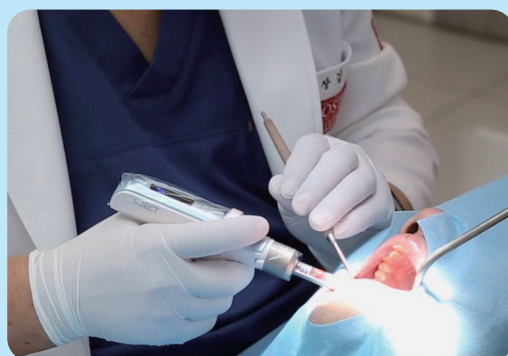
Inquiry ☎ + 82 70 4250 3990
Head Office (15808) #108, 201 SA Tower, 175. LS-ro, Gunpo-si Gyeonggi-do, Republic of Korea
T. + 82-70-7711-2007 / **F.** + 82 505 365 6126
Email : medihub@medihub.co.kr
Website : www.medihub.co.kr
www.iject.kr



Digital painless anesthetic syringe i-JECT for local anesthesia based on pain relief algorithm

We have studied the clinical application of anesthetic injections in the hospitals for more than 10 years.

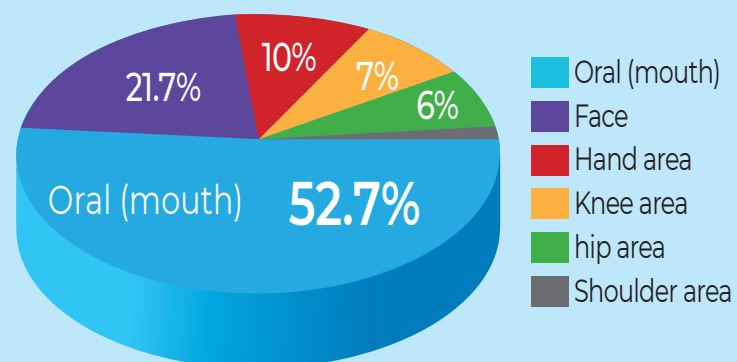
i-JECT was created through joint research and development with medical device R & BD platform at Seoul National University Dental Hospital, of which ergonomic design and the state-of-the-art patented technologies will help you with anesthesia procedures.



'i-JECT' Example of clinical use

What was the most painful part of the anesthesia procedure?

52.7% of patients in the hospital reported the most severe dental anesthesia.



- Subject of survey : Consumer Survey on Hospital Anesthesia Injections
- Investigating Organization: Open survey panel
- Survey period : 2020. 03. 20 ~ 03. 20
- respondents: total 300

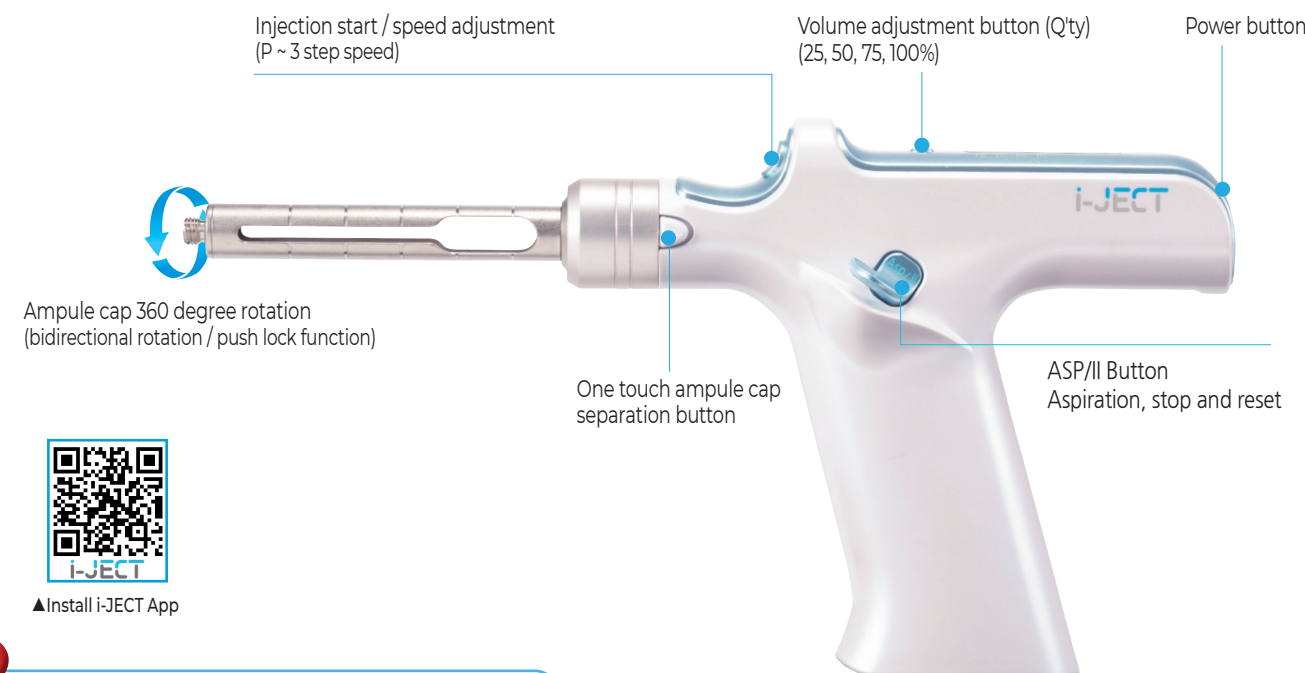


Digital automatic
anesthesia syringe for
doctors and patients

i-JECT



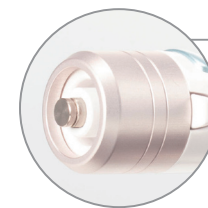
FDA Registered



▲Install i-JECT App

World's First

Aspiration function



Performing an aspiration function to prevent the insertion of a needle into the vessel during transfer anesthesia(When the ASP button is operated, the drug flows back and blood can be checked.)

'i-JECT' assembled with No-Pain adapter



85% Similar grip with manual syringe



Sterilizable metal cap (Stainless steel) is provided as standard to reduce the cost of consumables



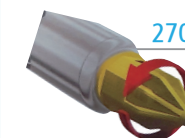
Metal ampule cap provided
(2EA : Sterilizable)



Plastic ampule cap
(Disposable / Option)



Convenient battery removal
(2 batteries included)



i-JECT dedicated needle

- 4 times fast clamping speed with single-turn
- Reduce the risk of infection from needle puncture



Use hygienic vinyl cover

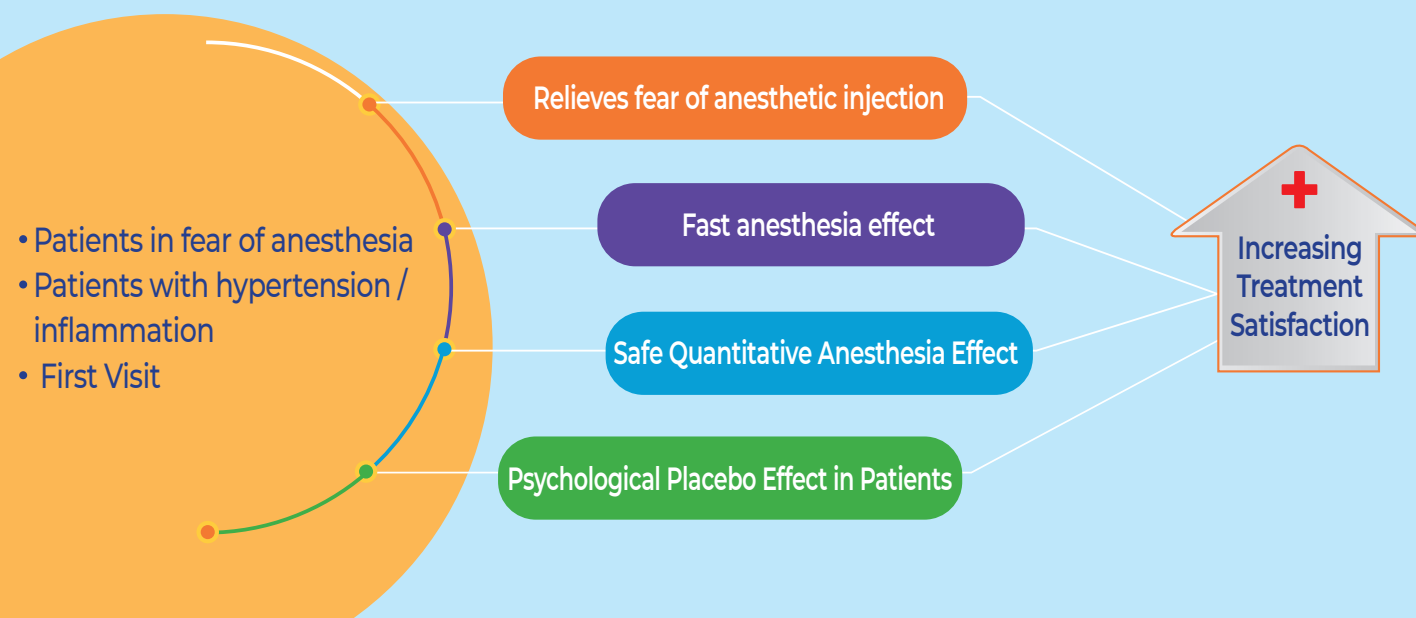
Prevent contamination such as foreign substances
(1Box : 300EA)

'i-JECT' can be used all are as of local anesthesia



Care for the patient begins with an unpainful anesthetic injection.

i-JECT is more effective for these patients.



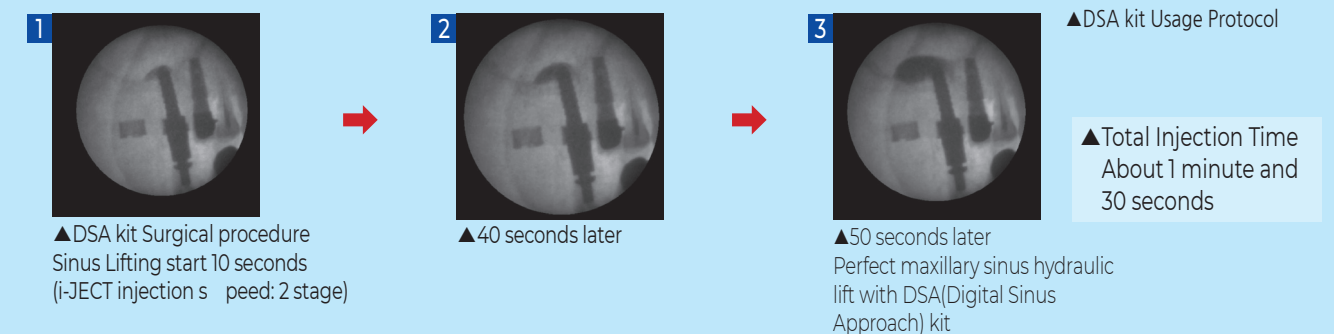
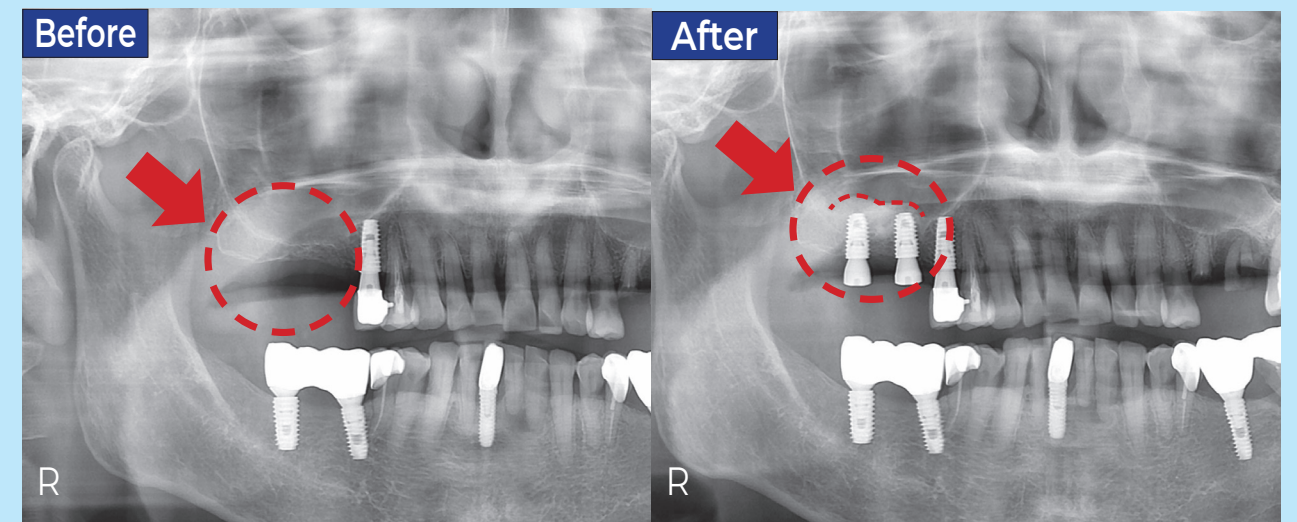
i-JECT DSA kit

DSA(Digital Sinus Approach)

Safety : Safely perform hydraulic lift with the function of precise and constant saline solution injection without damage to maxillary membrane.

Convenience : Digital automatic injection function by pressing a button rather than a conventional unstable manual injection method.

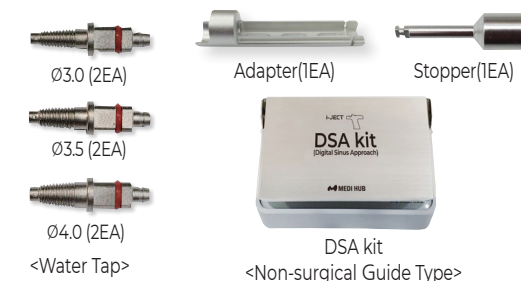
DSA clinical treatment using i-JECT (Digital Sinus Approach)



DSA kit Usage Protocol(Non surgical guide type)

Stage 1	Use 'Crestal Approach kit' and open the maxillary(less than 1mm) to be implanted.
Stage 2	Fully open the maxillary(more than 1mm) to be implanted by Water Tip to 50 rpm(implant placement mode).
Stage 3	Connect silicon tube at the bottom of Water Tip. (Before the connection, make sure that the silicon tube is filled with saline solution)
Stage 4	Press the Start Button and inject saline solution at 2nd Speed Stage.
Stage 5	1 minute 30 seconds later, complete maxillary membrane lifting with an injection of approximately 3ml of capacity. (Can be set to change the amount of celline injection)

• DSA kit Components



▲Clinical Procedure Video